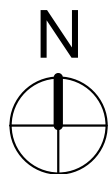




PROPOSED FLOOR PLAN

1/4" = 1'-0"



1

KEYNOTES		LEGEND	
1	EXISTING COLUMN TO REMAIN		EXISTING WALL TO REMAIN
2	EXISTING WALL TO REMAIN		NEW 3-5/8" METAL STUD WALL WITH 5/8" GYP BD BOTH SIDES, SEE DETAIL 1/A-800
3	NEW PARTIAL HEIGHT WALL SEE DETAIL 6/A-800		NEW LOW WALL 4'-0" A.F.F. SEE DETAIL 6/A-800
4	NEW WALL SEE DETAIL 1/A-800		NEW 6" METAL STUD 4'-0" TALL PLUMBING WALL WITH 5/8" GYP BD ON OUTSIDE FACE AND W.P. GREEN BOARD IN THE INSIDE/PLUMBING FACE, SEE DETAIL 8/A-800
5	EXISTING DOOR TO REMAIN		NOT PART OF THE SCOPE OF WORK
6	NEW DOOR PER SCHEDULE		EGRESS PATH OF TRAVEL
7	EXISTING STOREFRONT TO REMAIN		
8	INFILL WALL TO MATCH EXISTING ADJACENT		
9	EXISTING FLOOR FINISH TO REMAIN, PATCH AND REPAIR AS NECESSARY		
10	NEW CUBICLE PARTITION		
11	NEW LOCATION OF RELOCATED STOREFRONT DOOR		
12	INFILL STOREFRONT GLAZING AT (E) DOOR LOCATION TO MATCH ADJACENT		
13	NEW STOREFRONT DOOR TO MATCH EXISTING STOREFRONT PER SCHEDULE		
14	NOT IN CONTRACT		

CLIENT



Palo Verde Community College District
1 College Drive
Blythe, CA 92225

PROJECT NAME

Project 2
College Services Building
1 College Drive
Blythe, CA 92225

CONTRACTOR

DESIGNER



31045 Temecula Parkway
Suite 204
Temecula, CA 92592
T. 760.489.4432
www.sillmanwright.com

CONSULTANTS

REGISTRATION STAMP



ISSUE

Mark	Date	Description

DESIGNER PROJECT NO.: 17009

DRAWN BY: Author

CHECKED BY: Checker

SCALE: 1/4" = 1'-0"

DESIGN ITERATION

DSA Submittal 07/28/2017

DATE 7/28/2017

SHEET TITLE

PROPOSED FLOOR
PLAN

SHEET NUMBER

A-201